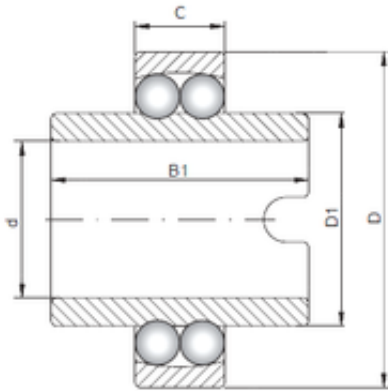




BEARING-MALAYSIA SDN.BHD.

ISO 11307 self aligning ball bearings



Bearing No. 11307

Size	35x80x21 mm
Bore Diameter	35 mm
Outer Diameter	80 mm
Width	21 mm
d	35 mm
D	80 mm
B1	56 mm
C	21 mm
D1	51,7 mm

11307 Bearing 2D drawings and 3D CAD models