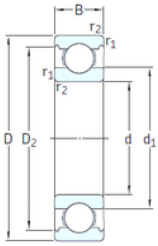




# BEARING-MALAYSIA SDN.BHD.



VA201



2Z/VA201



2Z/VA208



2Z/VA228

50 mm x 110 mm x 27 mm SKF 6310-2Z/VA201 deep groove ball bearings

Bearing No. 6310-2Z/VA201

6310-2Z/VA201 Bearing 2D drawings and 3D CAD models

Size	50x110x27 mm
Bore Diameter	50 mm
Outer Diameter	110 mm
Width	27 mm
d	50 mm
D	110 mm
B	27 mm
C	27 mm
d1	68,7 mm
r1 min.	2 mm
r2 min.	2 mm
D2	95,2 mm
Weight	1,1 Kg
Temperature -	30 to +250 °
Basic static load rating (C0)	38 kN
Category	Single Row Ball Bearings
Inventory	0.0
Manufacturer Name	SKF
Minimum Buy Quantity	N/A
Weight / Kilogram	0
Product Group	B00308
Enclosure	2 Metal Shields
Precision Class	ABEC 1   ISO P0
Maximum Capacity / Filling Slot	No
Rolling Element	Ball Bearing



## BEARING-MALAYSIA SDN.BHD.

Snap Ring	No
Internal Special Features	Polyalkylene Glycol/Graphite Mixture Filled
Cage Material	Steel
Internal Clearance	C0-Medium
Inch - Metric	Metric
Long Description	50MM Bore; 110MM Outside Diameter; 27MM Outer Race Width; 2 Metal Shields; Ball Bearing; ABEC 1   ISO P0; No Filling Slot; No Snap Ring; Polyalkylene Glycol/Graphite Mixture Filled Internal Special Fe
Other Features	Deep Groove   Extreme Temperature Variant
Category	Single Row Ball Bearing
UNSPSC	31171504
Harmonized Tariff Code	8482.10.50.68
Noun	Bearing
Keyword String	Ball
Manufacturer URL	<a href="http://www.skf.com">http://www.skf.com</a>
Weight / LBS	1.1
Outside Diameter	4.331 Inch   110 Millimeter
Inner Race Width	0 Inch   0 Millimeter
Bore	1.969 Inch   50 Millimeter
Outer Race Width	1.063 Inch   27 Millimeter
d <sub>1</sub>	68.76 mm
D <sub>2</sub>	95.2 mm
r <sub>1,2</sub> min.	2 mm
d <sub>a</sub> min.	61 mm
d <sub>a</sub> max.	68.7 mm
D <sub>a</sub> max.	99 mm
r <sub>a</sub> max.	2 mm



## BEARING-MALAYSIA SDN.BHD.

Basic dynamic load rating C	65 kN
Basic static load rating $C_0$	38 kN
Limiting speed	50 r/min
Limiting temperature T max.	250 ° C
Mass bearing	1.12 kg